

# EMI/EMC FILTER

## HP1 SERIES



### FEATURES

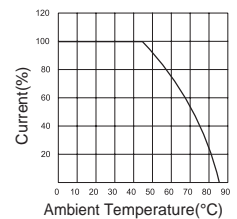
- Miniature general purpose PCB mounting type.
- Require small space of PCB.
- Low cost from unique structure.
- Designed for two wire cord systems.
- For three wire cord systems, Y capacitors can be attached externally.

### APPLICATIONS

- Personal computers and peripherals.
- Digital equipments.
- Measuring instruments and medical instruments.
- For use in miniature equipments.
- For TV, VCR, monitors and display units.
- For home appliances.

### SPECIFICATIONS

Model	Rated Voltage (AC,DC)	Rated Current	Temperature Rise	Operating Temperature
HP1-P10	250V	1A	40°C max.	-25°C to + 85°C Including temperature rise
HP1-P10-21(22/31)				
HP1-P16	250V	1.6A	40°C max.	
HP1-P16-21(22/31)				
HP1-P25	250V	2.5A	40°C max.	
HP1-P25-21(22/31)				
HP1-P36	250V	3.6A	40°C max.	
HP1-P36-21(22/31)				

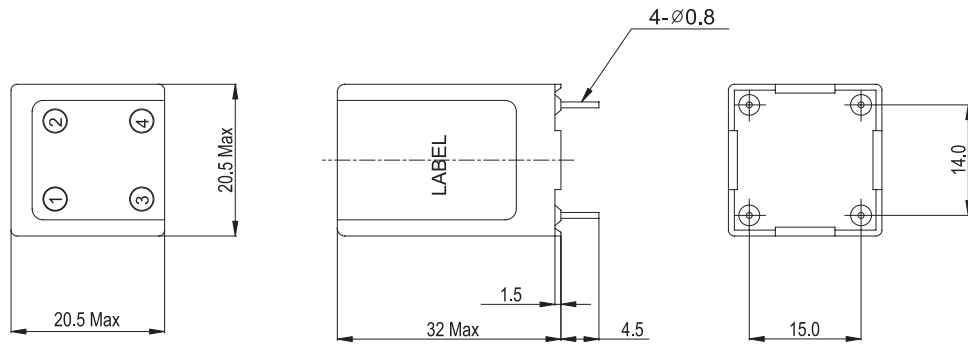


Note : Test Voltage : 1500V AC one minute, line to earth.  
 Insulation Resistance : 300 Mohm min. at 500V DC.  
 Voltage Drop : 1V max. at rated current.  
 Weight : 17.5g

#### Model Number Construction

HP I	P	10	2	1
Series Description	Input/Output Terminal Style P : PCB Pin	Current Rating : AC rms 10 : 1amp 16 : 1.6amp 25 : 2.5amp 36 : 3.6amp	Line-Line Cap. Value(CX1) None or 1 : 0.1 $\mu$ F 2 : 0.22 $\mu$ F 3 : 0.33 $\mu$ F	Line-Line Cap. Value(CX2) None or 1: 0.1 $\mu$ F 2 : 0.22 $\mu$ F

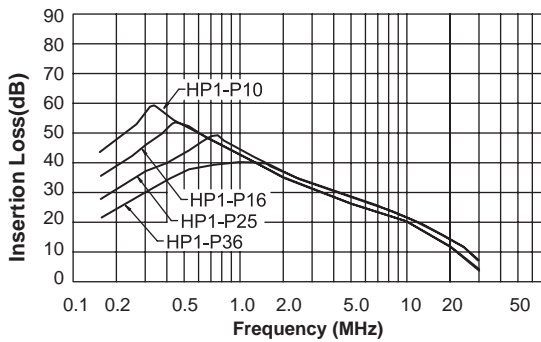
## Shapes and Dimensions



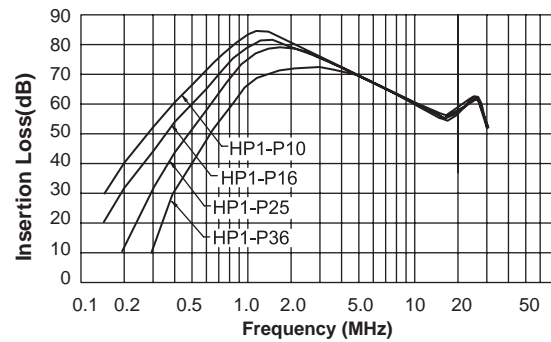
- General tolerance :  $\pm 0.5$
- Unit : mm
- Plastic Case

## Attenuation Characteristics

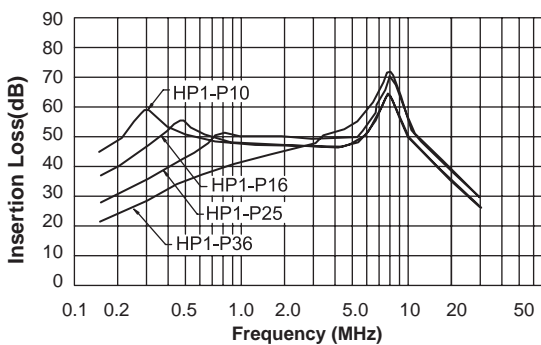
### ● Common Mode (Test Circuit 2)



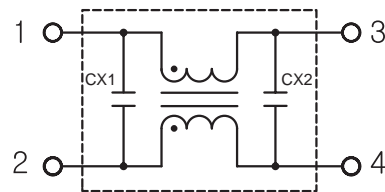
### ● Differential Mode (Test Circuit 3)



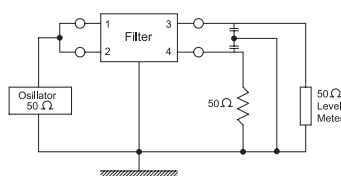
### ● Common Mode (Test Circuit 1)



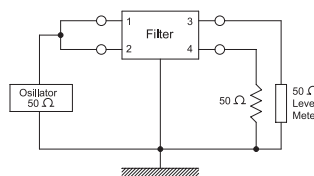
### ● Circuit Diagram



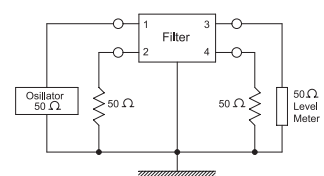
### ● Measurement configuration



Common Mode with Y-cap.  
(Test circuit1)



Common Mode  
(Test circuit2)



Differential Mode  
(Test circuit3)