

EMI/EMC FILTER

DS1 SERIES



FEATURES

- Suitable for the products that must conform to FCC, FTZ.
- Good shield effect by using metal case.
- Excellent filtering characteristics for both differential mode and common mode.
- Epoxy molded for reliability.
- Bidirectional structure effective for both noise from externally and internally generated.
- Compact and economical.

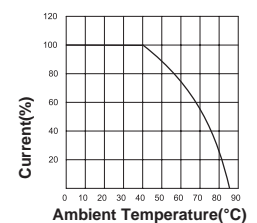
APPLICATIONS

- Digital equipments.
- Measuring instruments.
- OA equipments like copy machine.
- Mini computers and peripherals.
- Banking terminal.
- Suitable for FA equipments.

SPECIFICATIONS

Model	Rated Voltage (AC,DC)	Rated Current	Temperature Rise	Operating Temperature
DS1-T03, F03	250V	3A	45°C max.	-25°C to + 85°C Including temperature rise ※ Fig.1
DS1-T05, F05	250V	5A	45°C max.	
DS1-T08, F08	250V	8A	45°C max.	
DS1-T10, F10	250V	10A	45°C max.	

Note : All types are designed to meet the requirement of UL 1283, CSA 22.2, IEC 133200 : 1999 K60939
 Test voltage : 1500V AC one minute, line to earth.
 Insulation Resistance: 300 Mohm min. at 500 VDC .
 Leakage Current : 0.5mA max.
 Voltage Drop : 1V max. at rated current.
 Discharge time : 0.4sec max.
 Weight : 150g



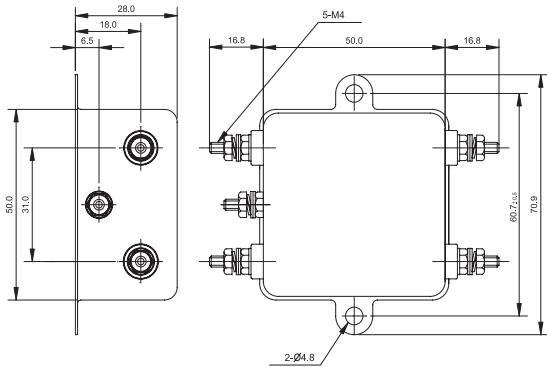
※ Fig.1

■ Model Number Construction

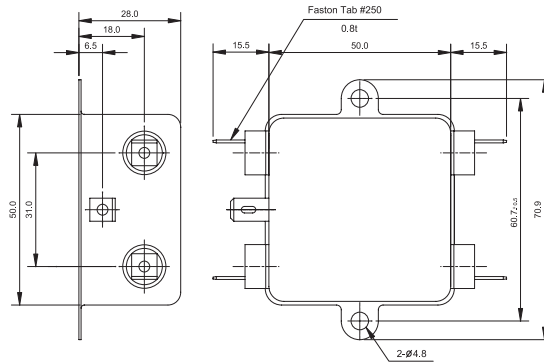
DS1	T	03
Series Description	Input/Output Terminal style F : Faston Tab #250 T : M4 Stud	Current Rating: AC rms 03 : 3 amp, 05 : 5 amp 08 : 8 amp, 10 : 10 amp

Shapes and Dimensions

DS1-T **



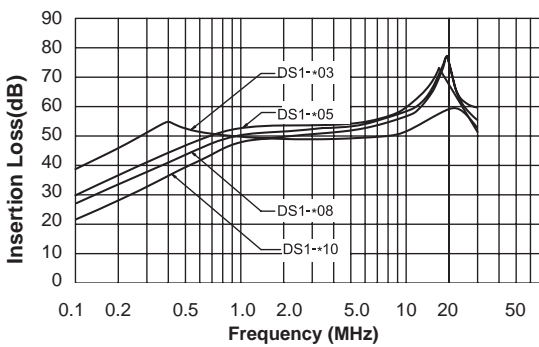
DS1-F **



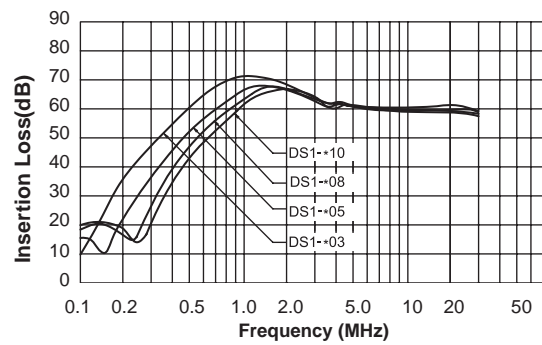
* General tolerance : ± 1.0
 * Unit : mm
 * Metal Case

Attenuation Characteristics

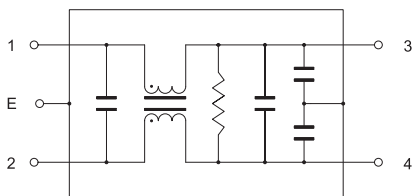
● Common Mode



● Differential Mode



● Circuit Diagram



● Measurement configuration

