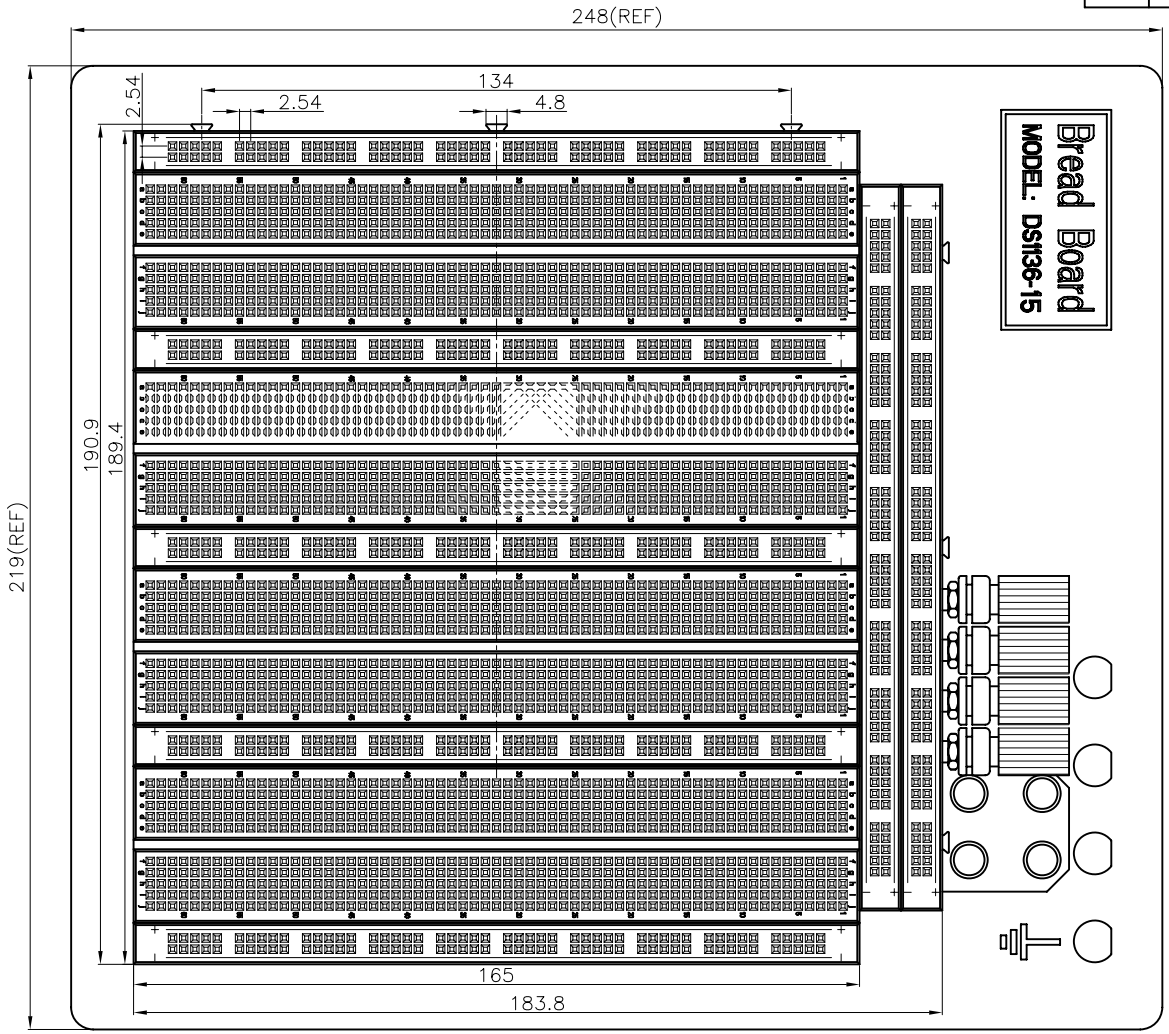


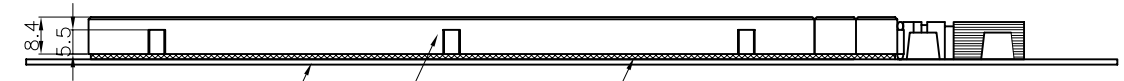
REV.	DESCRIPTION	DRAWN	CHECKED	APPROVED
A	NEW RELEASE	LL 05/06/06'		



- NOTES:
- Materials
    - 1.1. Insulator: thermoplastic
  - Specifications
    - 2.1. Temperature range:  $-20\sim+80^{\circ}\text{C}$ .
    - 2.2. Contact resistance:  $100\text{m}\Omega$  max.
    - 2.3. Insulation resistance:  $1000\text{M}\Omega$  min.
    - 2.4. Dielectric withstanding voltage: AC 500V Per minute.
  - Product number code:
 

DS1136-15 - X X X X

    - Housing color
    - W: White
    - Contact plating
    - N: Full nickel
    - Connector type
    - S: Socket
    - No. of contacts: 3220: 3220 Positions
    - SERIES No. DS1136-15



Aluminium board Insulator Adhesive tape

GENERAL TOLERANCE	ANGLE TOLERANCE
X. $\pm 0.60$	X. $\pm 5^{\circ}$
.X $\pm 0.38$	.X $\pm 3^{\circ}$
.XX $\pm 0.25$	.XX $\pm 2^{\circ}$

PROJECTION	TITLE
	Bread Board pitch 2.54mm
UNITS	mm
SHEET SIZE	A4
SERIES	DS1136-15 SERIES

DRAWING TYPE	CUSTOMER
SCALE	1:1 SHEET 1 OF 1
DRAWING NO.	C-DS1136-15-XXXX

晨翔电子有限公司  
**CONNFLY CONNFLY ELECTRONIC CO. LTD**