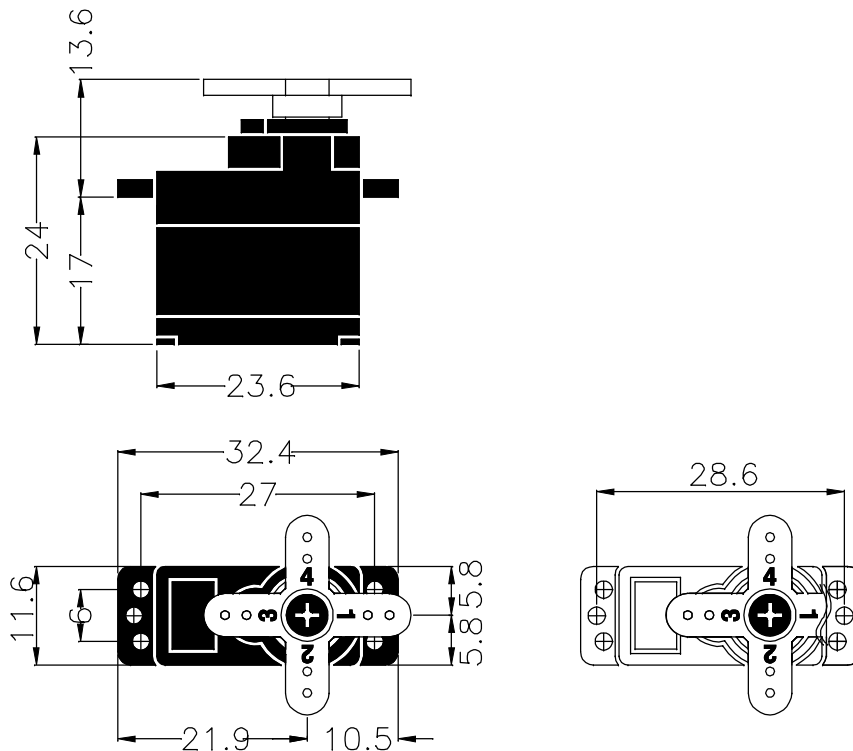


# GENERAL SPECIFICATION OF HS-65HB MIGHTY FEATHER SERVO

## 1. TECHNICAL VALUE

CONTROL SYSTEM	:+PULSE WIDTH CONTROL 1500usec NEUTRAL	
OPERATING VOLTAGE RANGE	:4.8V TO 6.0V	
OPERATING TEMPERATURE RANGE	:-20°C TO +60°C(-4°F TO +140°F)	
TEST VOLTAGE	:AT 4.8V	AT 6.0V
OPERATING SPEED	:0.14sec/60° AT NO LOAD	0.11sec/60° AT NO LOAD
STALL TORQUE	:1.8kg.cm(24.99oz.in)	2.2kg.cm(30.55oz.in)
STANDING TORQUE	:1.4kg.cm(19.44oz.in)/5° HOLDOUT	1.8kg.cm(24.99oz.in)/5° HOLDOUT
IDLE CURRENT	:8mA AT STOPPED	8mA AT STOPPED
RUNNING CURRENT	:180mA/60° AT NO LOAD	220mA/60° AT NO LOAD
STALL CURRENT	:960mA	1200mA
DEAD BAND WIDTH	:5usec	5usec
OPERATING TRAVEL	:40°/ONE SIDE PULSE TRAVELING 400usec	
DIRECTION	:CLOCK WISE/PULSE TRAVELING 1500 TO 1900usec	
MOTOR TYPE	:CORED METAL BRUSH/Nd MAGENT	
POTENTIOMETER TYPE	:2 SLIDER/DIRECT DRIVE	
AMPLIFIER TYPE	:ANALOG S.M.T	
DIMENSIONS	:23.6x11.6x24mm(0.92x0.45x0.94in)	
WEIGHT	:11.2g(0.39oz)	
BALL BEARING	:SINGLE/MR85	
GEAR MATERIAL	:HEAVY DUTY RESIN	
HORN GEAR SPLINE	:25 SEGMENTS/∅5	
SPLINED HORNS	:MICRO23:M23-I, M23-X	
CONNECTOR WIRE LENGTH	:160mm(6.29in)	
CONNECTOR WIRE STRAND COUNTER	:20 EA	
CONNECTOR WIRE GAUGE	:28AWG	



## 2. FEATURES

HEAVY DUTY RESIN GEARS WITH BALL BEARING  
HIGH EFFICIENCY Nd MAGNET MOTOR

## 3. APPLICATIONS

FAST PARK FLYING MODELS. ELECTRIC MICRO PLANE, MAV  
1/18 SCALE CARS